

3D landscape visualisations

PBC4GGR Project

Robert Berry, Countryside and Community Research Institute (CCRI)



PERENNIAL BIOMASS CROPS
PBC4GGR
GREENHOUSE GAS REMOVAL



Objective

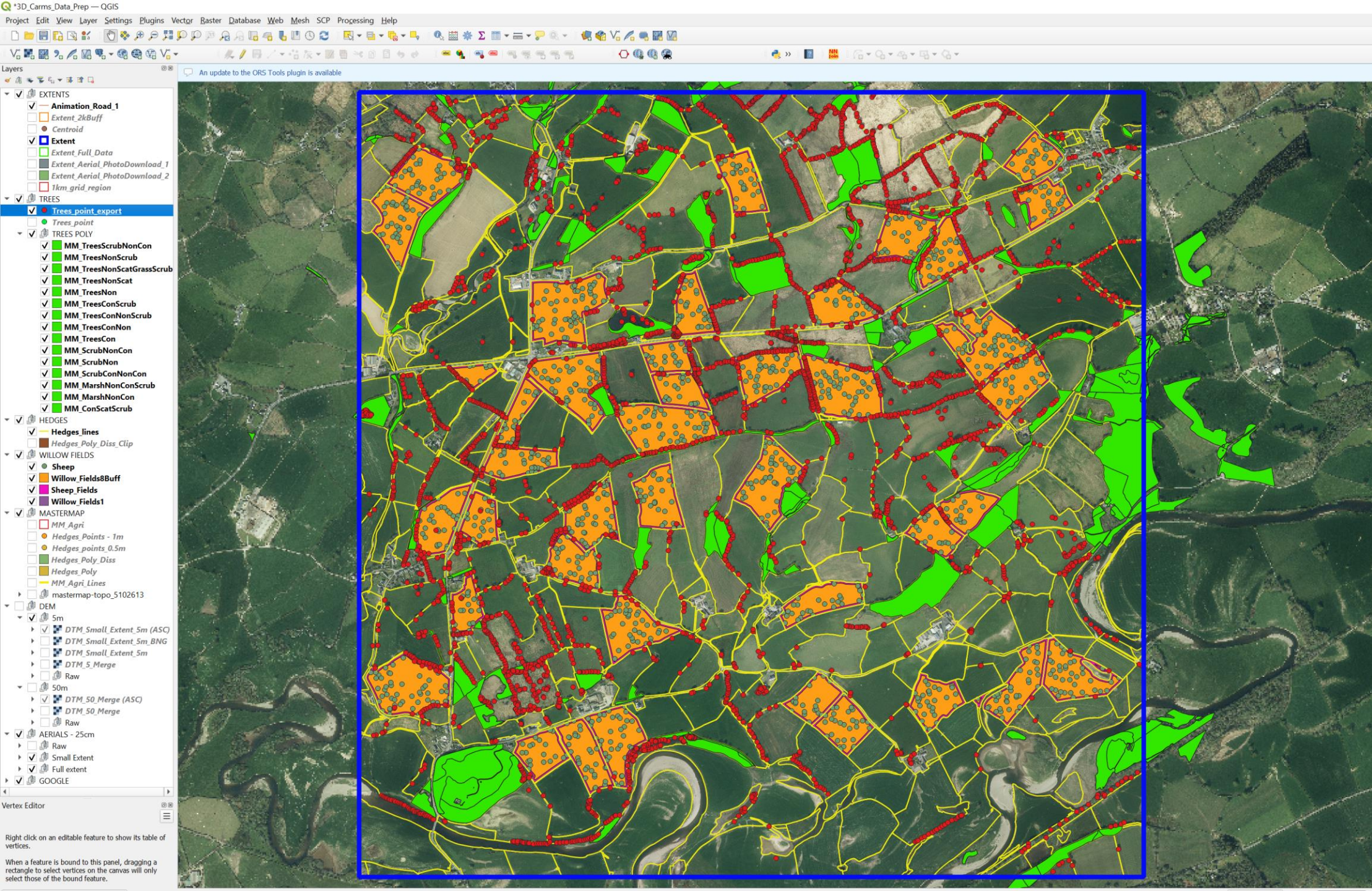
- Understand how to enable PBCs to be successfully scaled-up
- Produce visualisations for PBC4GGR stakeholder workshops
- Visualise “before” and “after” PBC planting scenarios to:
- Help investigate potential social barriers to increased PBC production

About

- Visualisations produced by Robert Berry, CCRI (rberry@glos.ac.uk)
- Software: Visual Nature Studio 2, QGIS, Photoshop, Adobe Premiere
- Data:
 - Ordnance Survey 5m digital terrain model
 - Ordnance Survey MasterMap
 - Getmapping aerial photography
- Copyright:
 - Images can be shared and used for non-commercial purposes and academic research with permission of CCRI.
 - Copyright statements are included on each image.

How to use

- Each slide contains two images – one "before" and one "after" willow planting
- Click on "before" image and slide will transition to show "after" scenario



From
2D
to
3D

Carmarthenshire Study Area

Camera 1











Camera 6





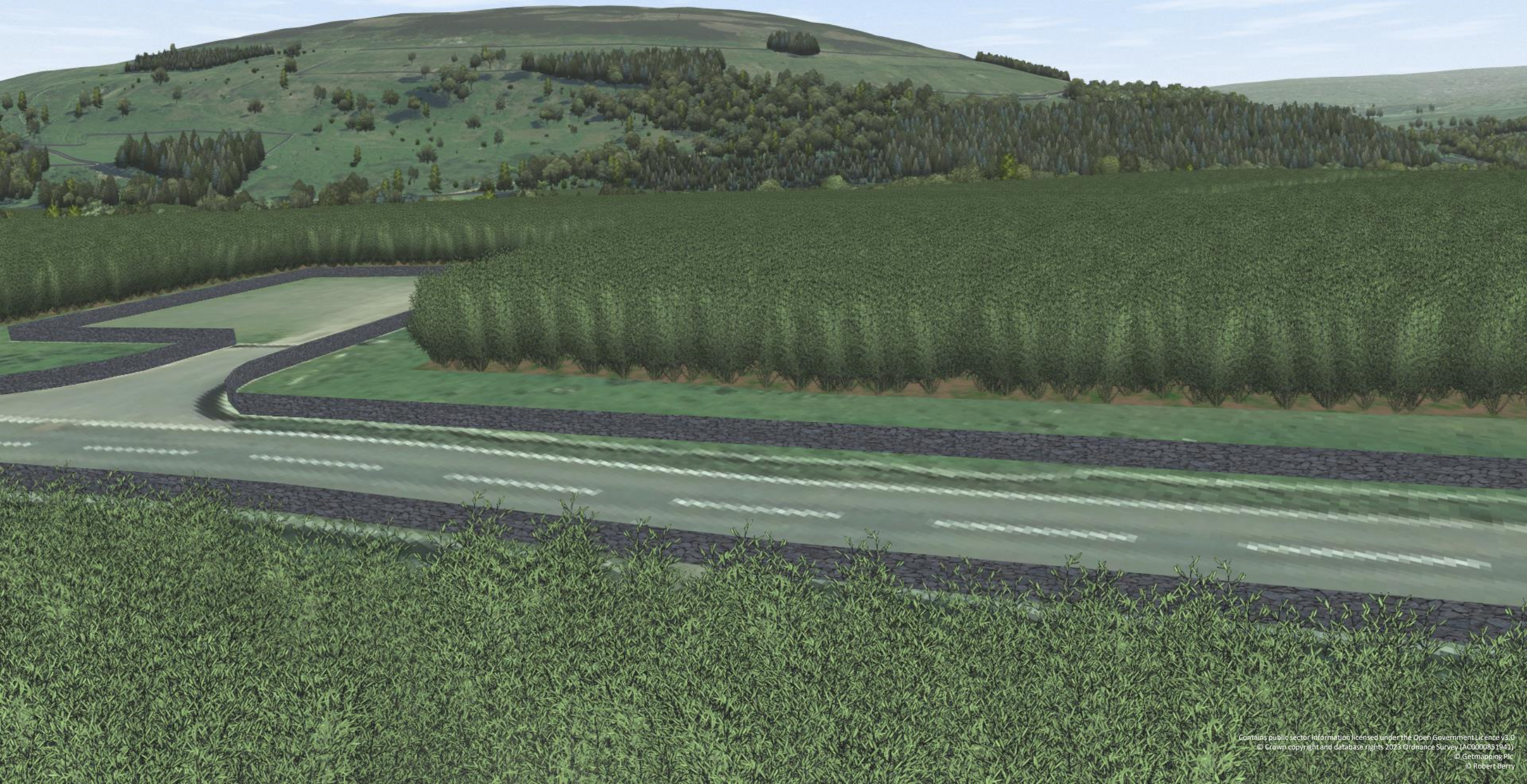






Hexham Study Area

Camera 1
A689



Camera 2
Robinwood Coach Park



Camera 3

Williamston Common



Camera 6
Looking south above Slaggyford



Camera 9

River Tyne Trail looking north

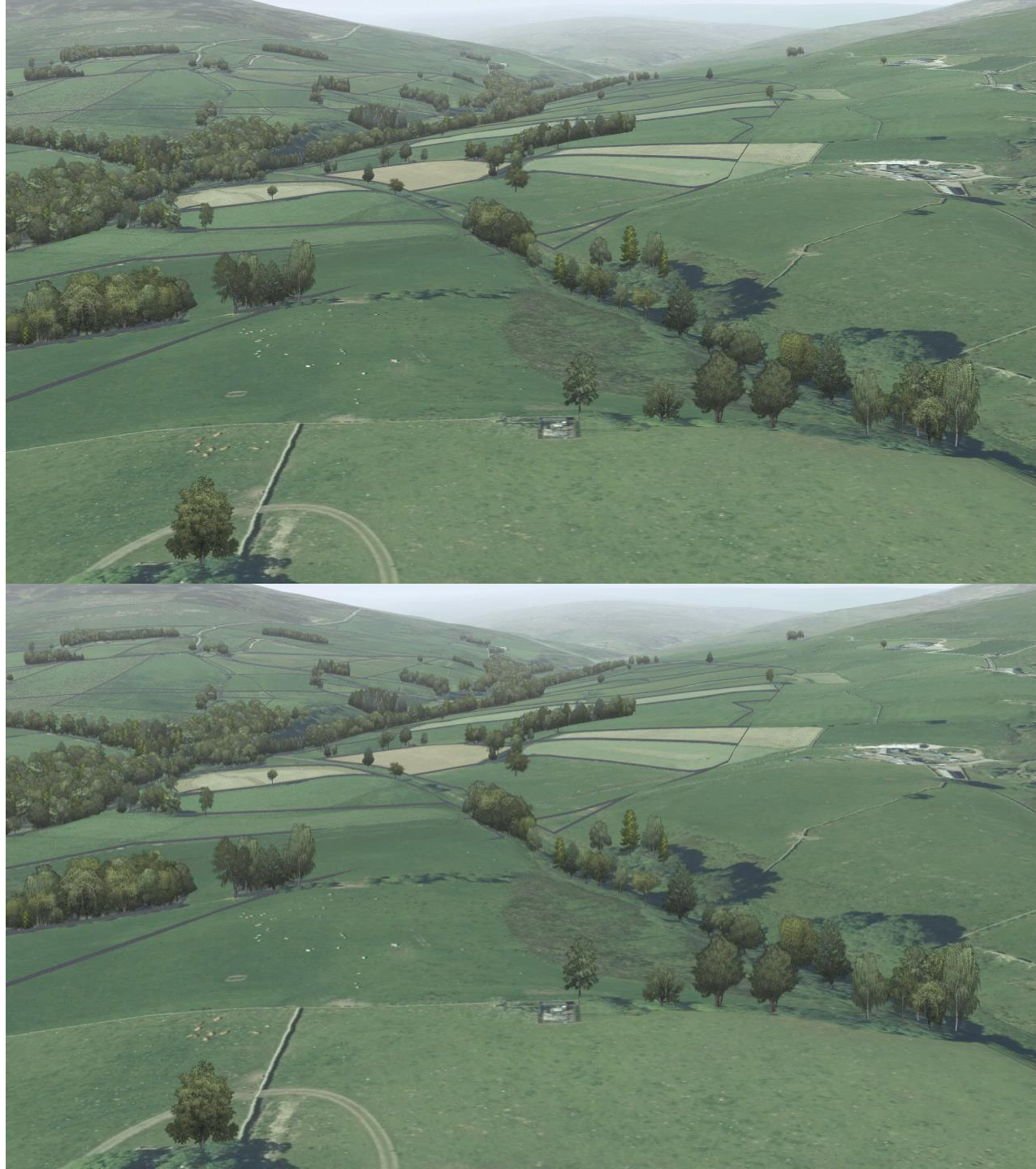


Animations

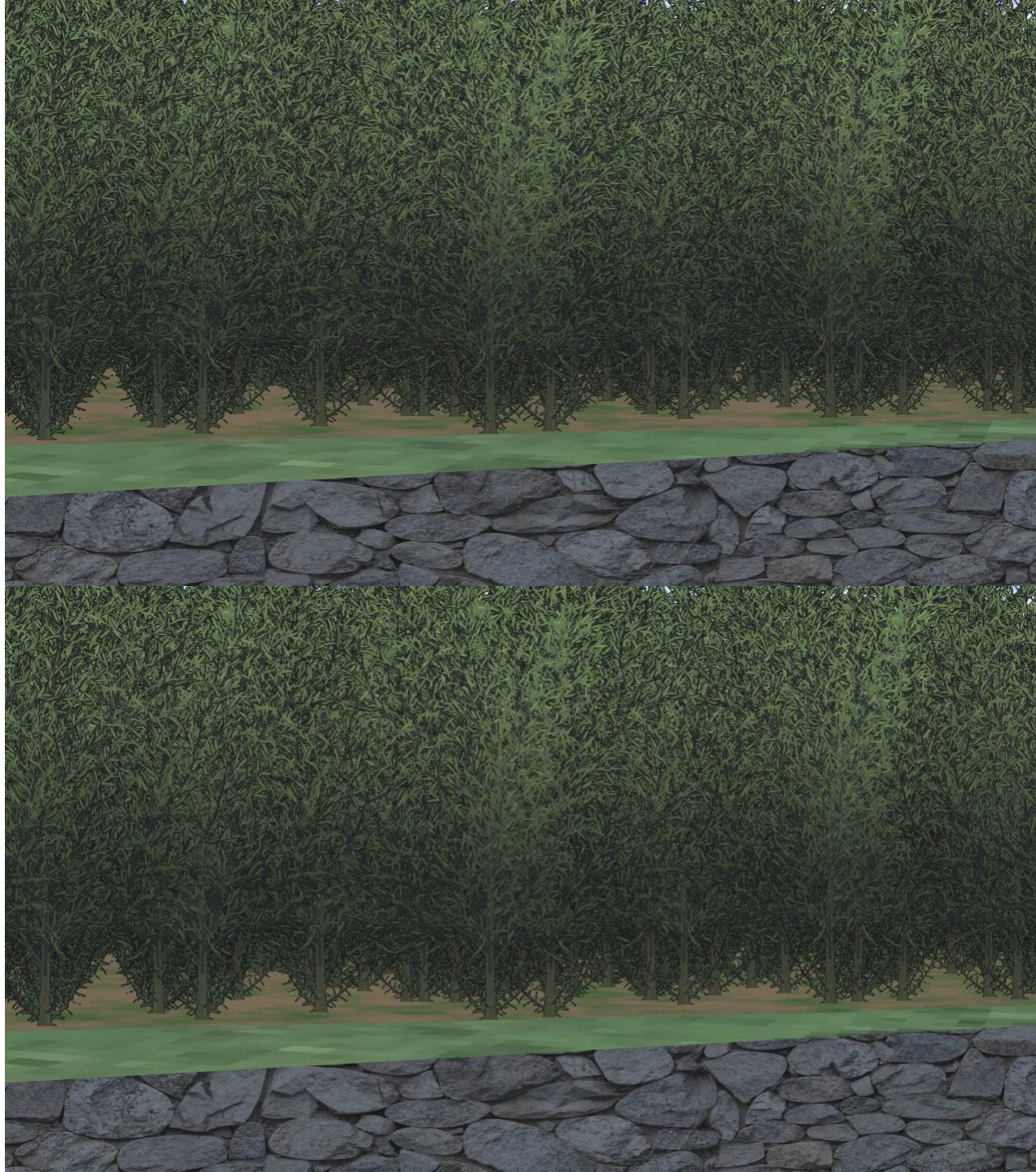
Carmarthenshire



Hexham



Hexham



© Robert Berry (rberry@glos.ac.uk)